

BRUNTON

RESIDENTIAL



CORDWAINERS, MORPETH, NE61

£157,500

BRUNTON

RESIDENTIAL





BRUNTON

RESIDENTIAL



BRUNTON

RESIDENTIAL



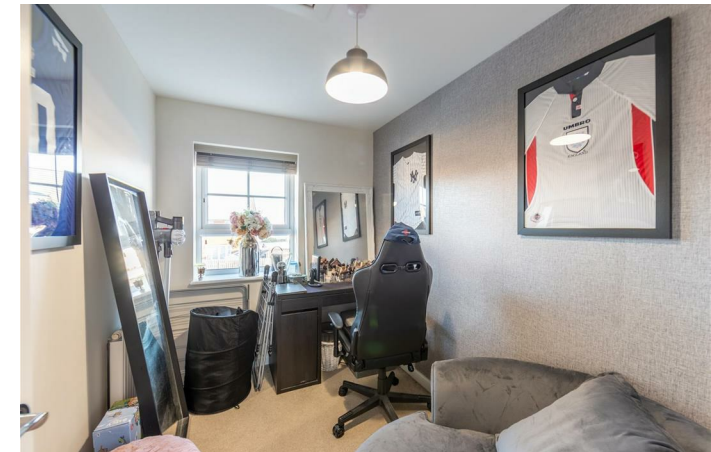
THREE BEDROOM | SEMI-DETACHED | REDUCED VALUE SCHEME

Brunton Residential are delighted to offer for sale this semi-detached house, blending modern living with comfort. It features three well-proportioned bedrooms, two contemporary bathrooms, a rear garden, and allocated off-street parking.

The property enjoys convenient access to local amenities, including a Sainsbury's Local and Morrisons. Stobhillgate First School and The King Edward VI School are nearby. For outdoor recreation, Carlisle Park offers gardens, river walks, and play areas. Morpeth railway station, just 900 metres away, provides excellent transport links.

BRUNTON

RESIDENTIAL



BRUNTON

RESIDENTIAL

Upon entering, you are welcomed into a bright entrance hall. To your left, you'll find a well-appointed kitchen, fitted with sleek cabinetry, while a convenient WC is located to the right.

At the rear of the property, a generously sized lounge/diner spanning the width of the property offers a versatile living space, complete with double doors that open onto the rear garden, creating a seamless indoor outdoor flow.

Upstairs, the first floor hosts three bedrooms. The master bedroom is a standout feature, benefiting from its own ensuite shower room. The second bedroom is spacious and ideal for family or guests, while the smaller third bedroom offers flexibility as a cosy office or nursery. A separate family bathroom serves the second and third bedrooms.

Externally, the property boasts a private rear garden and allocated off-street parking, all situated in a desirable area that blends convenience and tranquillity.

Tenure

The agent understands the property to be freehold. However, this should be confirmed with a licenced legal representative.

Council Tax Band C



BRUNTON

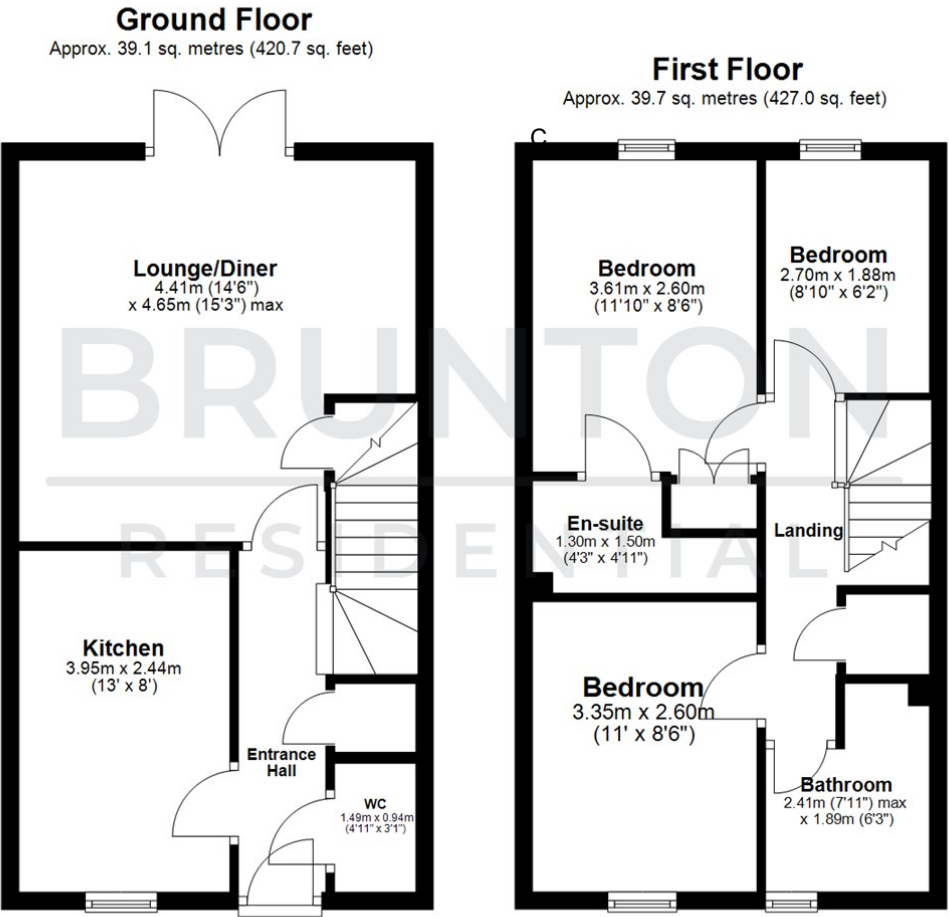
RESIDENTIAL

TENURE : Freehold

LOCAL AUTHORITY :

COUNCIL TAX BAND : C

EPC RATING : B



All measurements are approximate and are for illustration only.
Plan produced using PlanUp.

